

## Importing a Connection Entry

You can automatically configure your VPN client with new settings by importing a new configuration file (a file with a .pcf extension, called a profile) supplied by your network administrator.

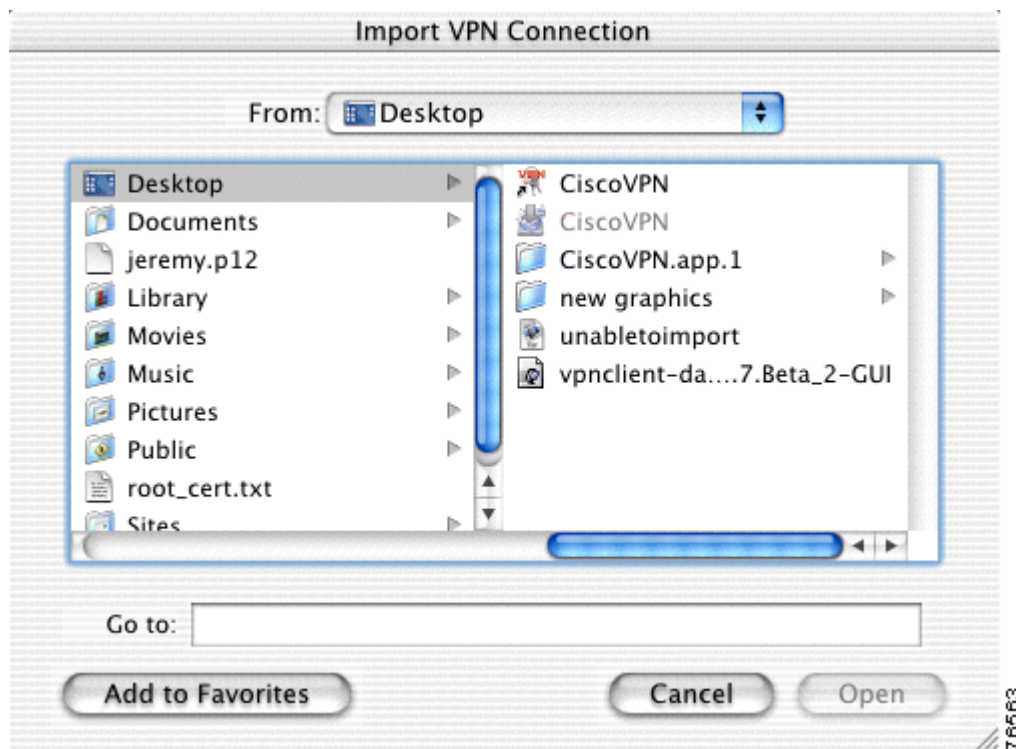
To import a stored profile:

---

**Step 1** Click the **Connection Entries** tab.

**Step 2** Click **Import** at the top of the VPN client window. The Import VPN Connection dialog box appears ([Figure 7-1](#)).

**Figure 7-1** Import VPN Connection



**Step 3** Locate the connection entry to import. A valid connection entry configuration file must have a .pcf extension.

**Step 4** Click **Open**. The connection entry is added to the list of available profiles and you return to the Connection Entries tab.

Alternately, you can copy the .pcf file into the profiles directory and restart the VPN client application.

---